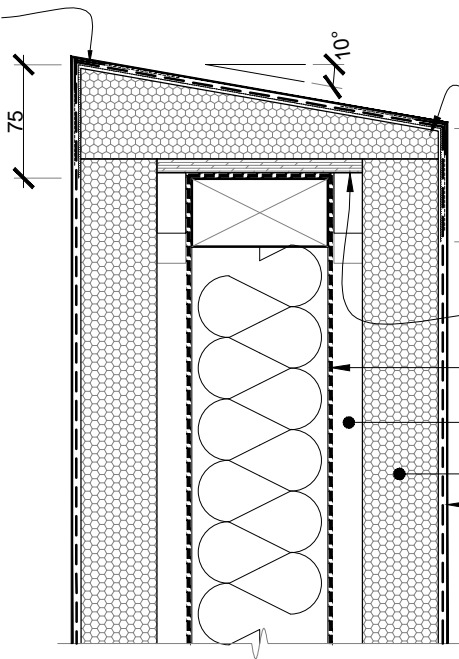


STOTHERM CAP AT 10°
OVERSEATS WALLS, GLUE
TO 9mm FIBRE CEMENT
SHEET OR H3.1 PLYWOOD
OVER TOP PLATE/CAVITY



STO PREMESHED uPVC ADJUSTABLE
CORNERS
OVERLAY OF STO FLEXYL MEMBRANE
UNDER MESH COAT TO TOP & SIDES,
75mm MIN. DOWNTURN OVER
LEVELITE BASE COAT

9mm FIBRE CEMENT SHEET OR H3.1
PLYWOOD OVER FRAMING
WALL UNDERLAY CONTINUOUS
OVER TOP OF WALL FRAME
20mm DRAINED
CAVITY
STOTHERM PANEL
STOTHERM PLASTER
SYSTEM

NOTE:
STO FLEXYL MESHED WATERPROOFING MEMBRANE HAS BEEN
TESTED BY **BRANZ** TO MEET THE REQUIREMENTS OF **AS/NZS4858**
AS REQUIRED BY **E2/AS1**

EXTRA HIGH WIND ZONES REQUIRE A RIGID UNDERLAY. WITH
FLASHING TAPED TO RIGID UNDERLAY

SCALE 1:5

STOTHERM SYSTEM	STOTHERM CONSTRUCTION SYSTEM	ST 501
	PLASTERED PARAPET/BALUSTRADE DETAIL	2014

The information contained in this detail is based on our experience and testing and represents the latest information available at the date of issue. This detail is intended for use by the design professional and users of Sto products to assist in developing specific project details to be used in conjunction with a Sto Specification. We reserve the right to alter or update information at any time without prior notice & it is the responsibility of the specifier and/or the project manager to insure that they have the current Sto details and specifications.