

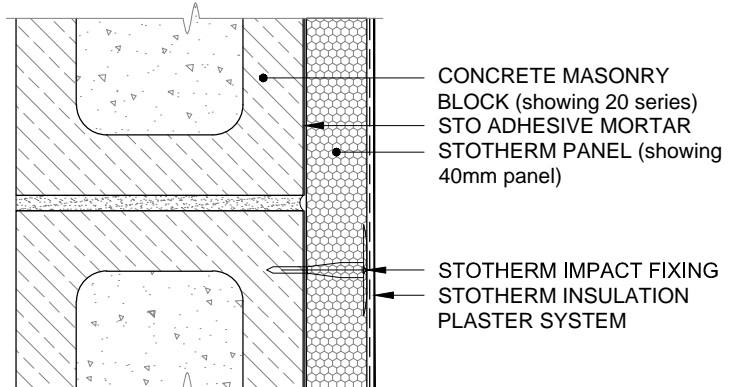
1. SURFACE MOUNTED FIXINGS: STOTHERM MASONRY INSULATION SYSTEM USES FACE FIXED STOTHERM ANCHORS ON 40-50mm STOTHERM PANELS. FACED FIXED ANCHORS CAN EXHIBIT THERMAL BRIDGING SPOTS IN COLD WEATHER

2. STOTHERM INSULATION PANELS:

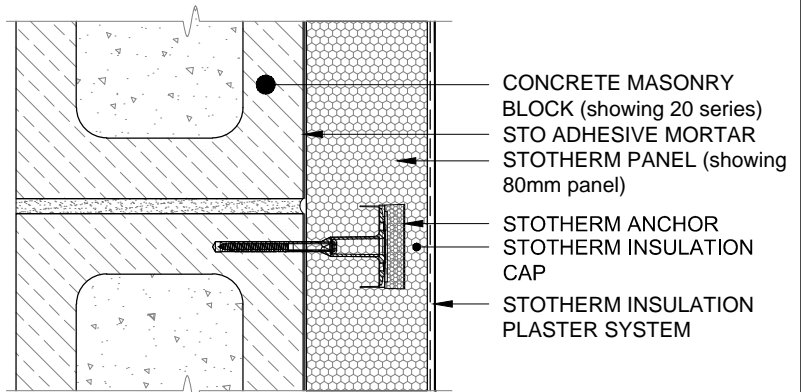
STOTHERM	40mm	R-VALUE 1.0
	50mm	R-VALUE 1.3
	60mm	R-VALUE 1.57
	80mm	R-VALUE 2.1
	100mm	R-VALUE 2.63
STOTHERM+	40mm	R-VALUE 1.3
	50mm	R-VALUE 1.6
	60mm	R-VALUE 1.93
	80mm	R-VALUE 2.58
	100mm	R-VALUE 3.22

3. COUNTER SUNK FIXINGS: STOTHERM MASONRY INSULATION SYSTEM STOTHERM ANCHORS WITH STO INSULATING CAP ELIMINATES *THERMAL BRIDGING SPOTS* ON 60, 80 & 100mm STOTHERM PANEL. ALSO NOTE, IMPACT FIXINGS CAN ALSO BE USED ON 60mm or 80mm STOTHERM PANEL. COUNTER SUNK HOLES ARE SUNK USING A STO ROUTER.

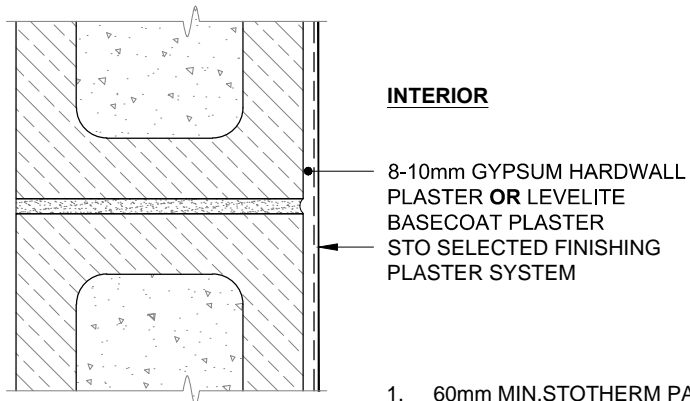
4. STOTHERM INTERIOR PLASTER SYSTEM: LEVELLITE BASECOAT WITH SELECTED FINISHES or GYPSUM PLASTER IN SELECTED FINISHES



STOTHERM IMPACT ANCHORS - FOR FACE FIXED FIXINGS



STOTHERM COUNTERSUNK ANCHORS IN 60, 80 or 100mm STOTHERM PANEL - TO ELIMINATE THERMAL BRIDGING



1. 60mm MIN. STOTHERM PANELS REQUIRED FOR COUNTERSUNK FIXINGS

STO CONCRETE BLOCK	STO CONCRETE BLOCK INSULATION SYSTEM STOTHERM MASONRY FIXING	STCB 103
		2014