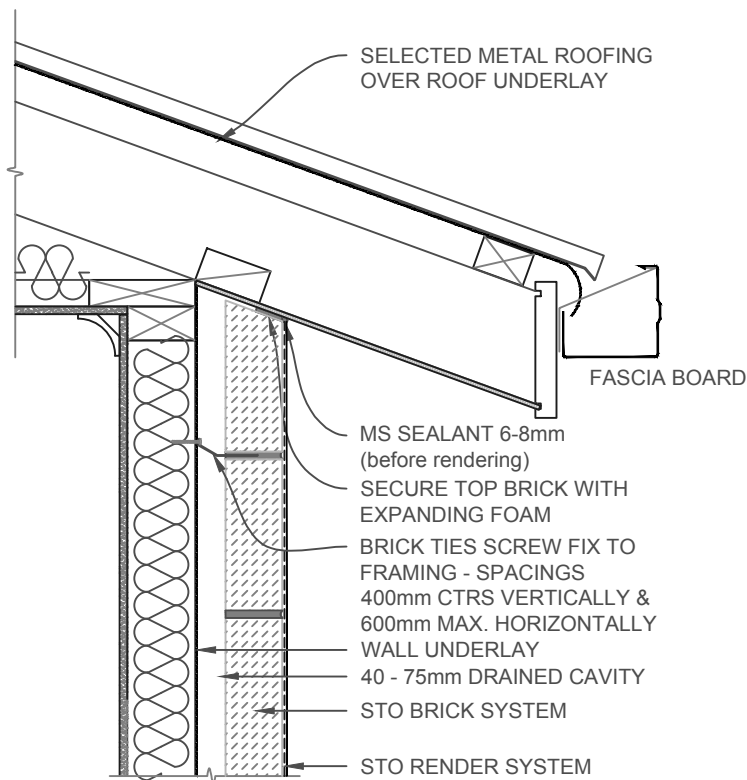


**NOTE:** VENTING AT SOFFITS IS NOT REQUIRED WITH STO BRICK DRY CAVITY SYSTEM

SCALE 1:10

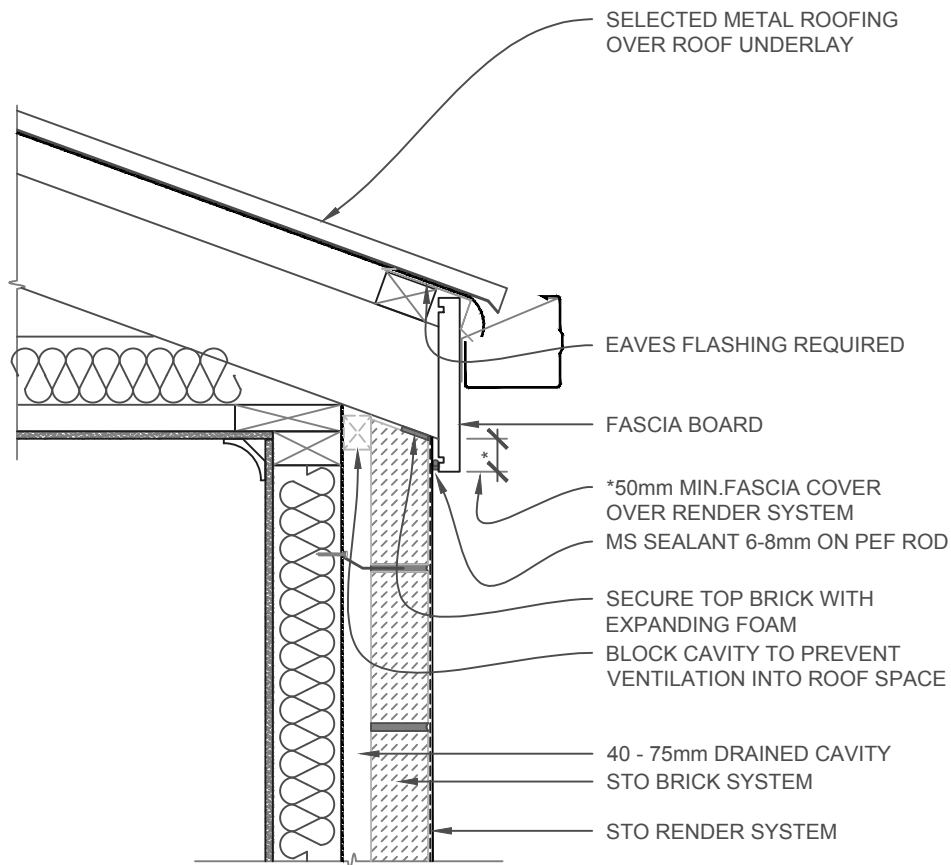
<b>STO BRICK SYSTEM</b>	<b>STO BRICK SYSTEM FLAT SOFFIT/WALL JUNCTION</b>	<b>PB 600</b>
		<b>2019</b>



**NOTE:** VENTING AT SOFFITS **IS NOT** REQUIRED WITH STO POREN BRICK DRY CAVITY SYSTEM

SCALE 1:10

<p><b>STO BRICK SYSTEM</b></p>	<p><b>STO BRICK SYSTEM</b> <b>RAKING SOFFIT/WALL JUNCTION</b></p>	<p><b>PB 601</b></p>
		<p><b>2019</b></p>

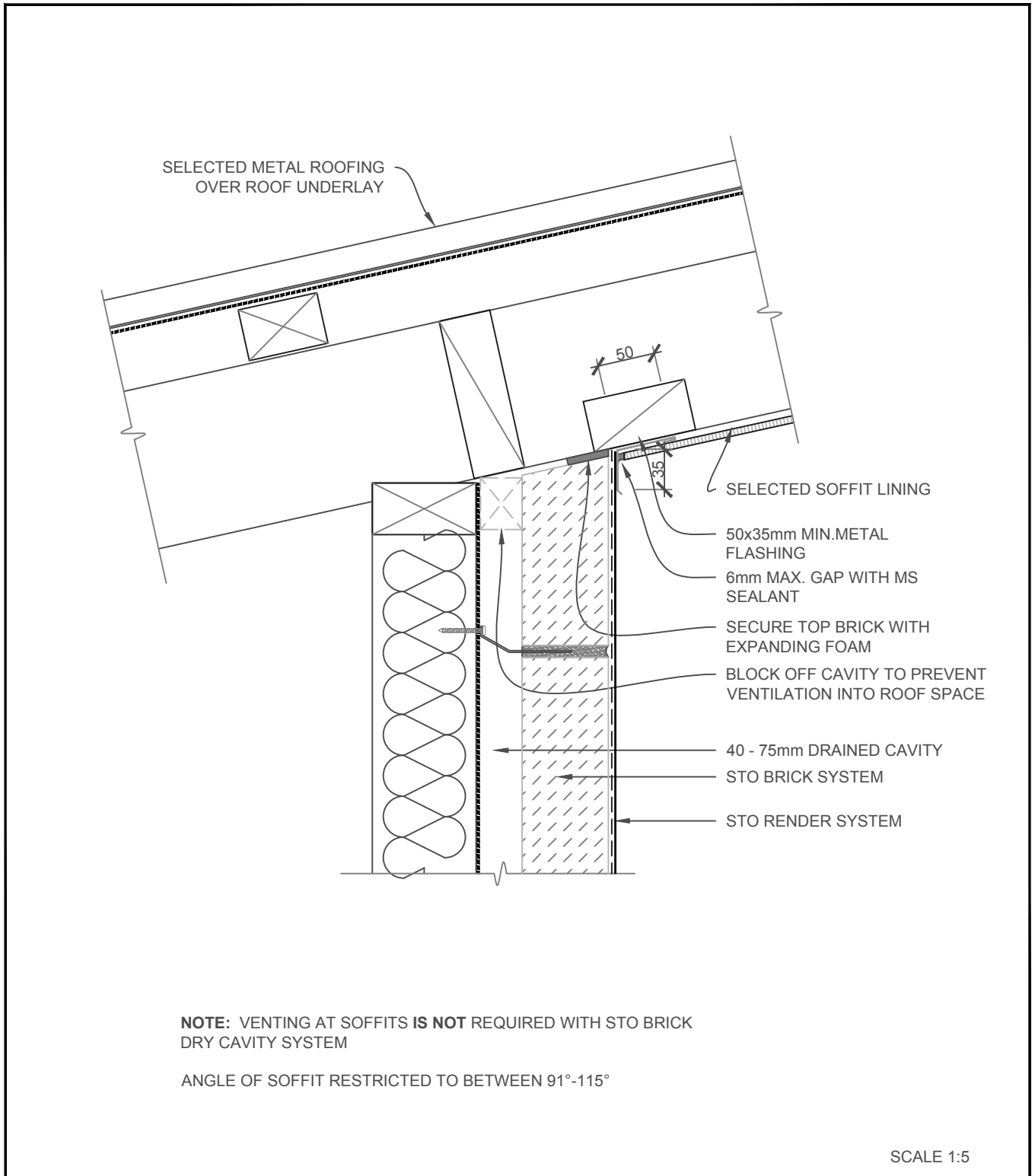


**NOTE:** VENTING AT SOFFITS IS **NOT** REQUIRED WITH STO BRICK DRY CAVITY SYSTEM

EAVE FLASHINGS ARE REQUIRED WHEN SOFFIT WIDTH IS 100mm OR LESS FROM WALL CLADDING, ROOF PITCH IS LESS THAN 10° AND WIND ZONES ARE VERY HIGH OR EXTRA HIGH

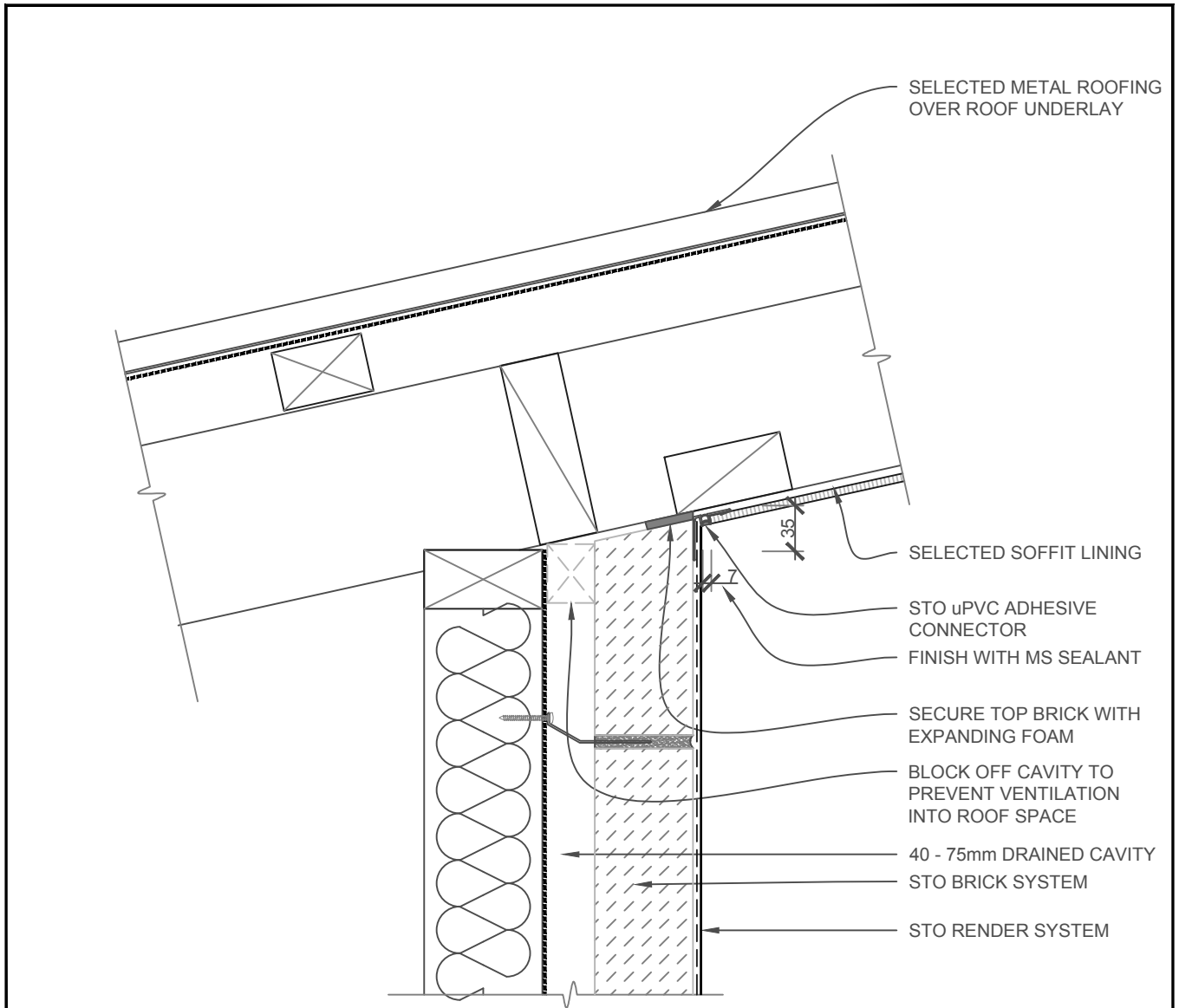
SCALE 1:10

<p><b>STO BRICK SYSTEM</b></p>	<p><b>STO BRICK SYSTEM</b></p> <p><b>FACED FIXED FASCIA</b></p>	<p><b>PB 602</b></p>
		<p><b>2019</b></p>



<b>STO BRICK SYSTEM</b>	<b>STO BRICK SYSTEM</b>	<b>PB 603</b>
	<b>RAKING SOFFIT</b>	<b>2019</b>

The information contained on this page is based on our experience and research at the date of issue. The detail is for use by Registered Architects, Licensed Designers or Chartered Engineers to assist in developing project details using Sto Systems. Stoanz Ltd reserve the right to alter or update information at any time without prior notice and it is the responsibility of the designer, project manager or Sto contractor to insure they have and use the current Sto details and specifications on site.

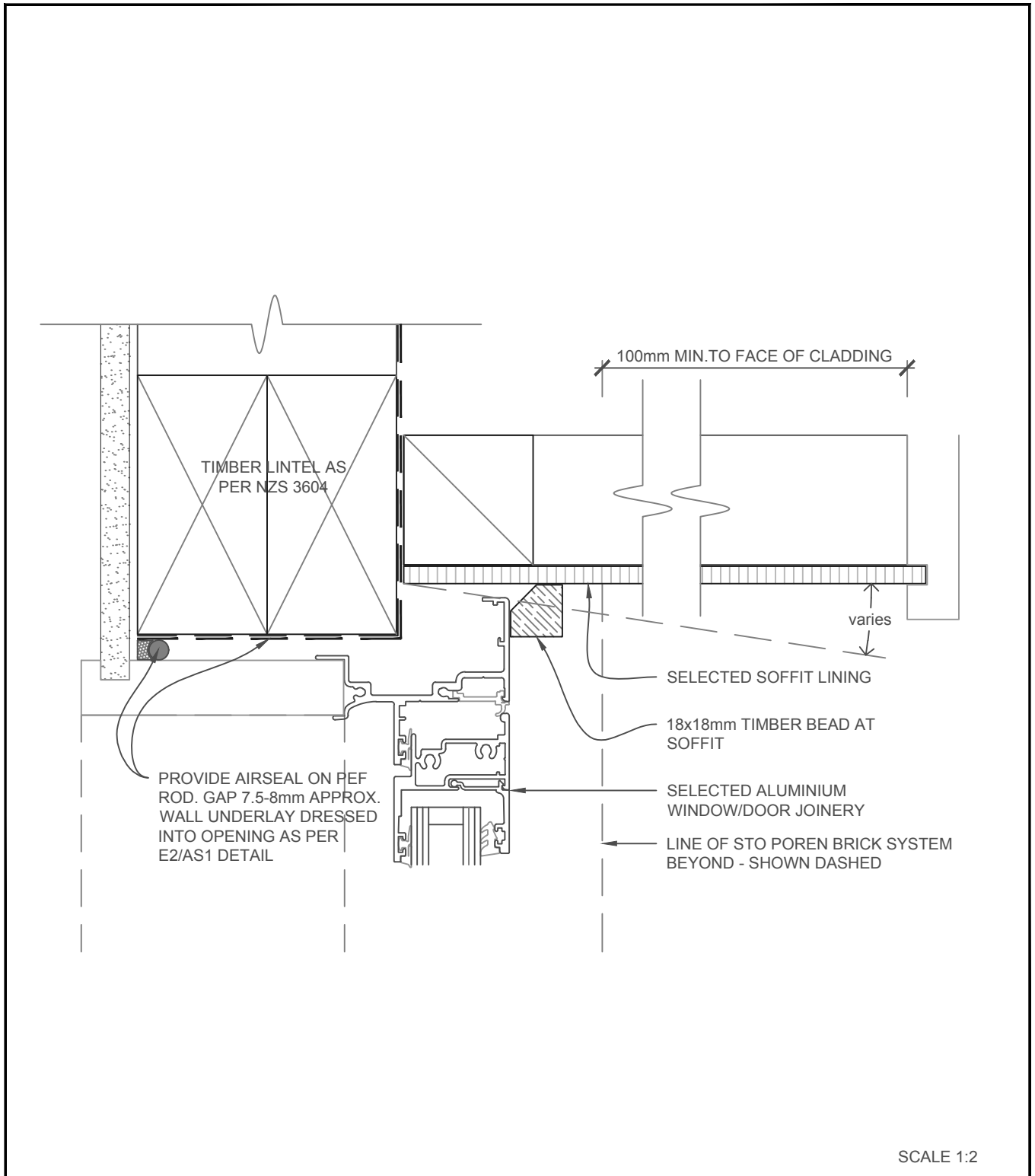


**NOTE: VENTING AT SOFFITS IS NOT REQUIRED WITH STO BRICK CAVITY SYSTEM**

ANGLE OF SOFFIT RESTRICTED TO BETWEEN 91°-115°

SCALE 1:5

<b>STO BRICK SYSTEM</b>	<b>STO BRICK SYSTEM</b>	<b>PB 604</b>
	<b>RAKING SOFFIT - STO uPVC ADHESIVE CONNECTOR</b>	<b>2019</b>



<b>STO BRICK SYSTEM</b>	<b>STO BRICK SYSTEM</b>	<b>PP 605</b>
	<b>SOFFIT AT WINDOW/DOOR HEAD</b>	<b>2019</b>