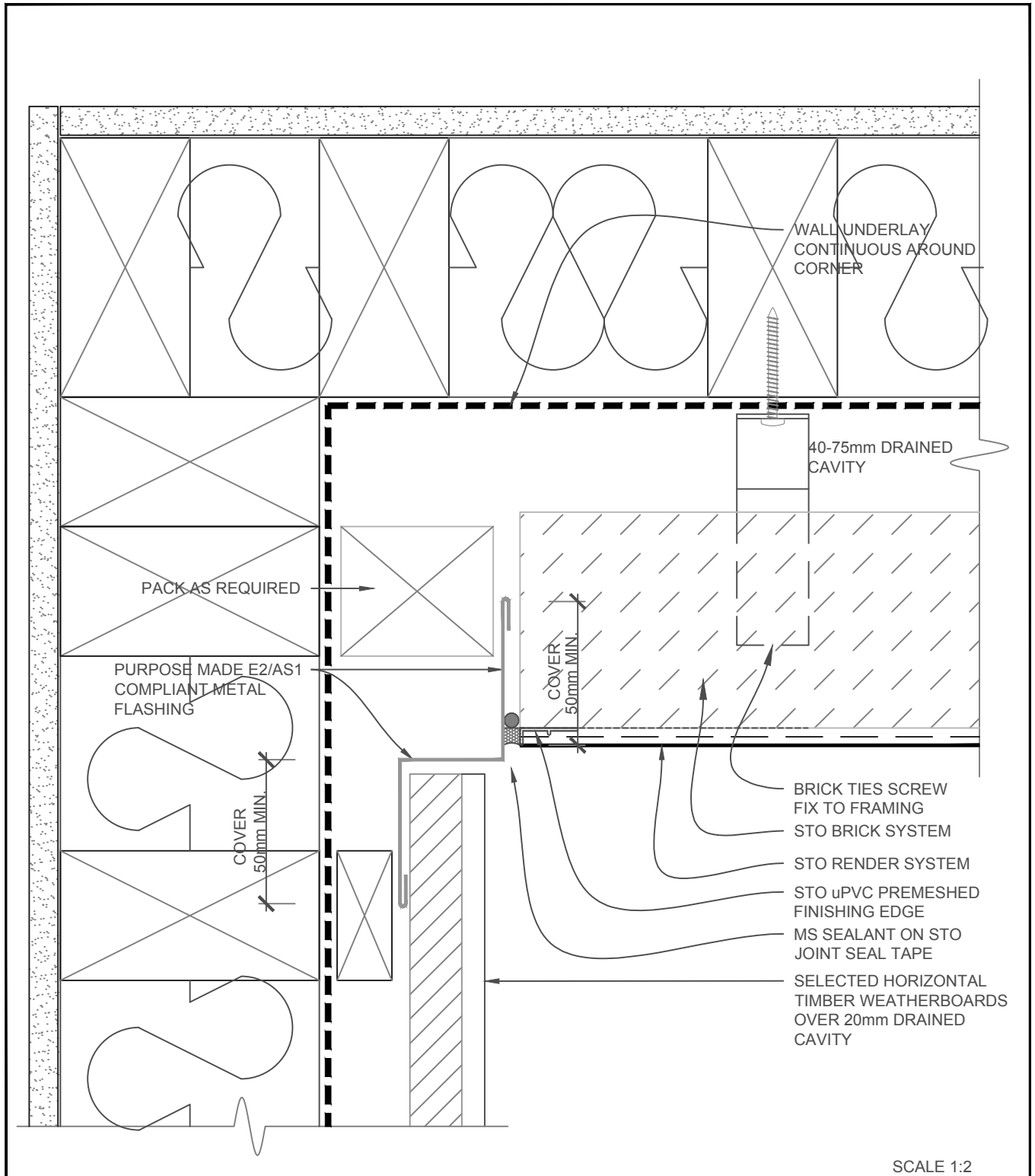


SCALE 1:2

STO BRICK SYSTEM	STO BRICK SYSTEM	PB 800
	WEATHERBOARD/STO BRICK SYSTEM - EXT.CNR	2019

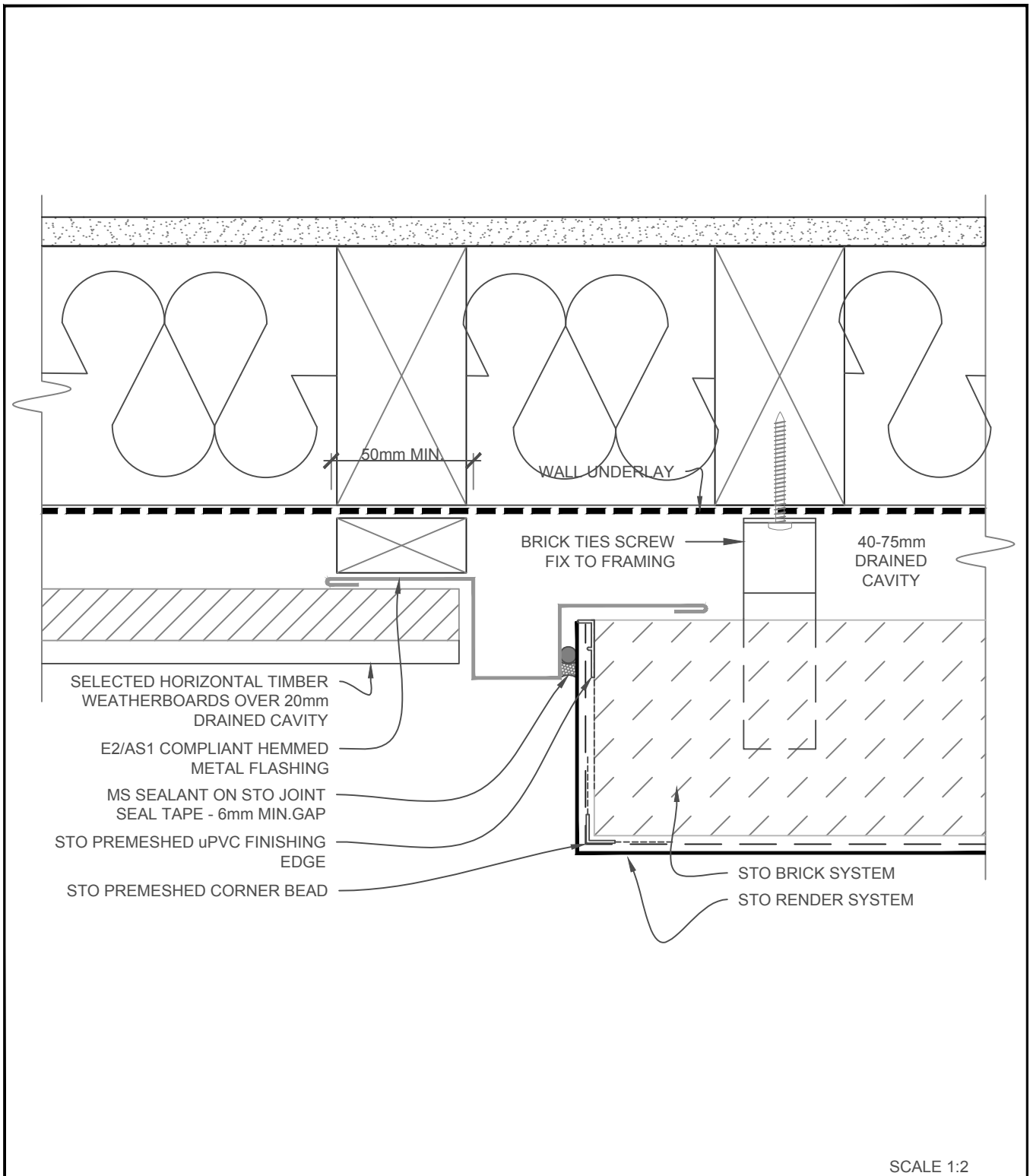
The information contained on this page is based on our experience and research at the date of issue. The detail is for use by Registered Architects, Licensed Designers or Chartered Engineers to assist in developing project details using Sto Systems. Stoanz Ltd reserve the right to alter or update information at any time without prior notice and it is the responsibility of the designer, project manager or Sto contractor to insure they have and use the current Sto details and specifications on site.



SCALE 1:2

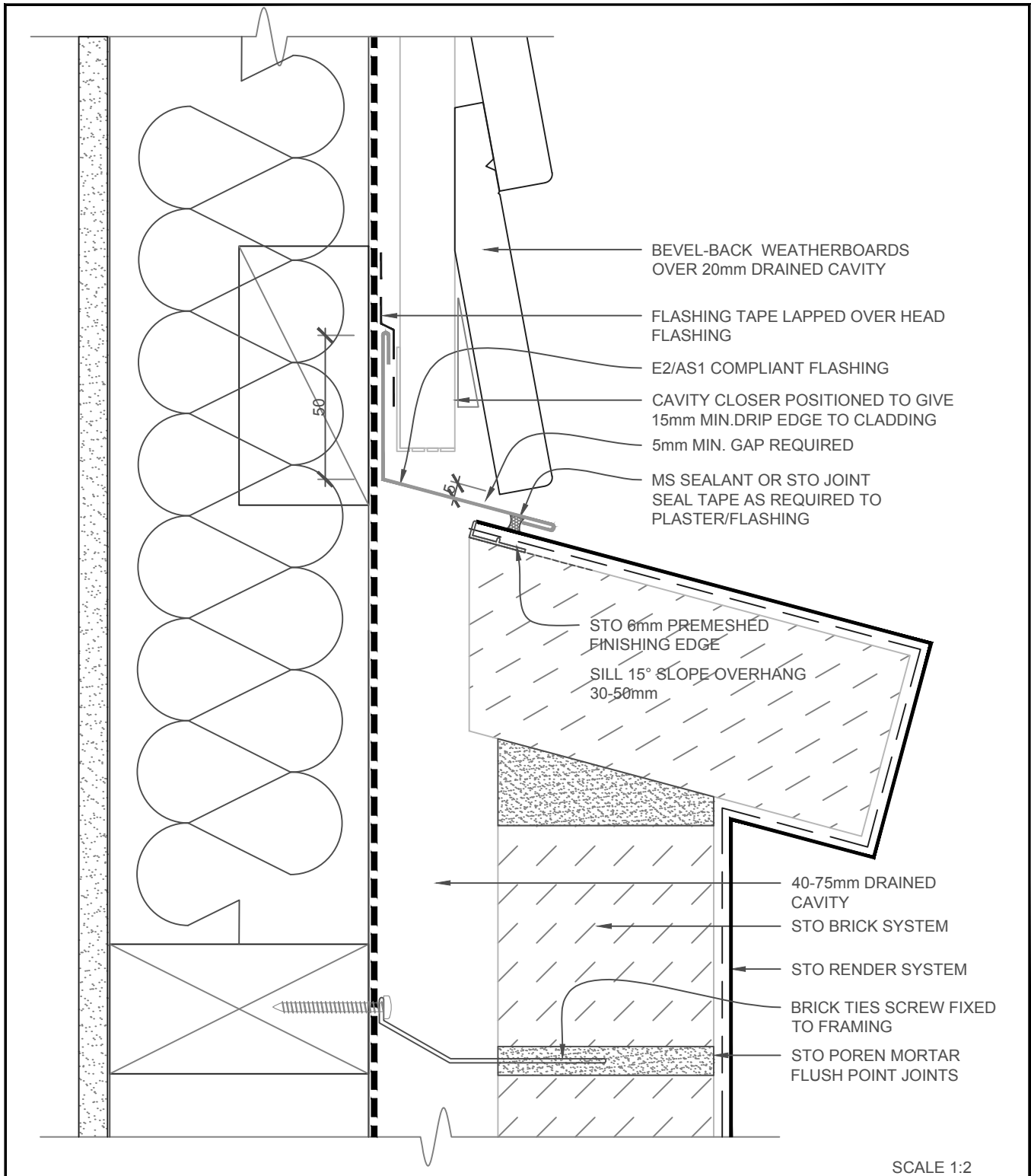
STO BRICK SYSTEM	STO BRICK SYSTEM	PB 801
	W'BOARD/STO BRICK SYSTEM INT.CNR	2019

The information contained on this page is based on our experience and research at the date of issue. The detail is for use by Registered Architects, Licensed Designers or Chartered Engineers to assist in developing project details using Sto Systems. Stoanz Ltd reserve the right to alter or update information at any time without prior notice and it is the responsibility of the designer, project manager or Sto contractor to insure they have and use the current Sto details and specifications on site.



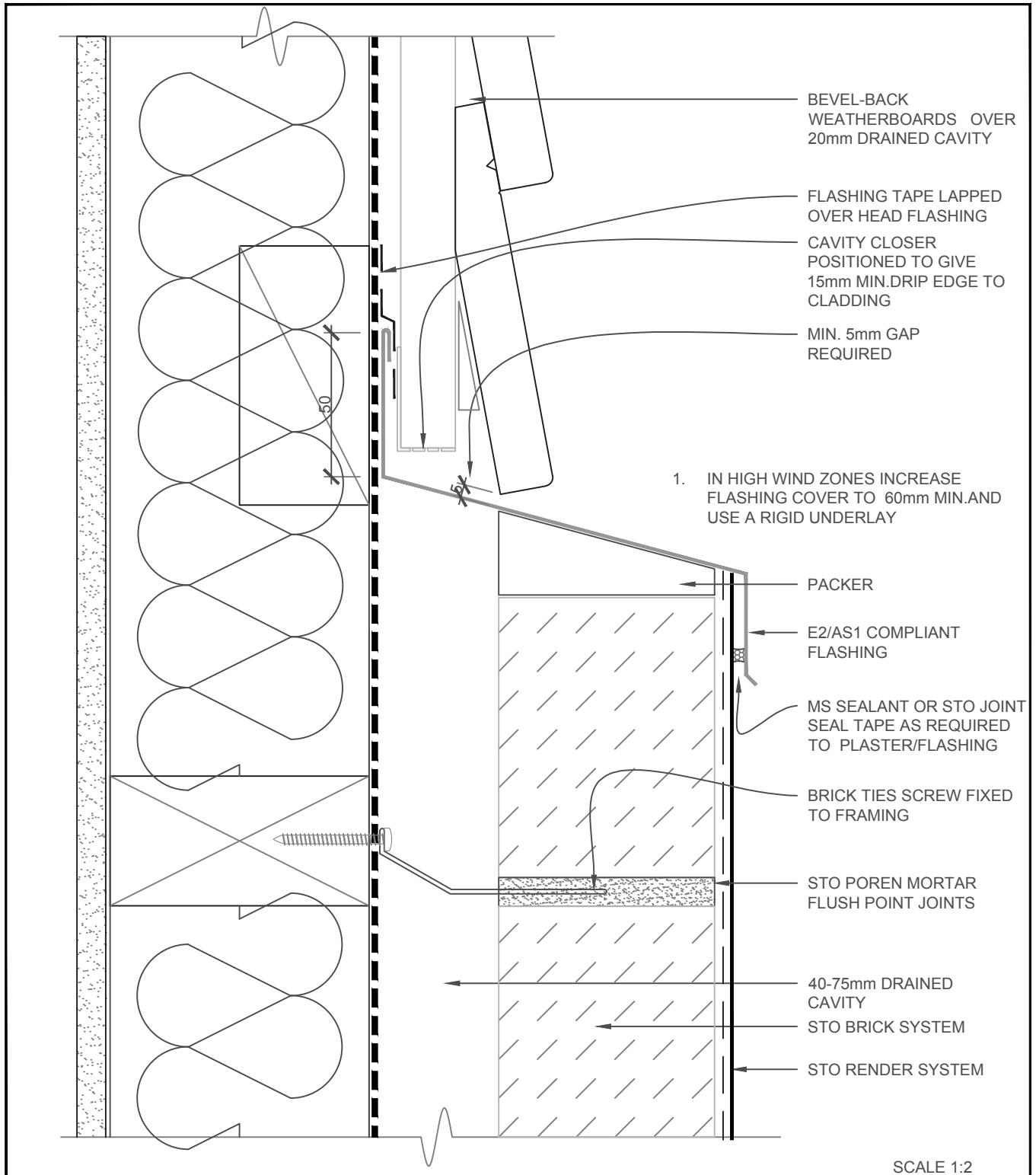
STO BRICK PLASTER	STO BRICK SYSTEM	PB 802
	VERTICAL JOINT - W'BOARD/STO BRICK SYSTEM	2019

The information contained on this page is based on our experience and research at the date of issue. The detail is for use by Registered Architects, Licensed Designers or Chartered Engineers to assist in developing project details using Sto Systems. Stoanz Ltd reserve the right to alter or update information at any time without prior notice and it is the responsibility of the designer, project manager or Sto contractor to insure they have and use the current Sto details and specifications on site.



STO BRICK SYSTEM	STO BRICK SYSTEM	PB 803
	HORIZ.JUNCTION W'BD/STO BRICK SYSTEM - OPT 1	2019

The information contained on this page is based on our experience and research at the date of issue. The detail is for use by Registered Architects, Licensed Designers or Chartered Engineers to assist in developing project details using Sto Systems. Stoanz Ltd reserve the right to alter or update information at any time without prior notice and it is the responsibility of the designer, project manager or Sto contractor to insure they have and use the current Sto details and specifications on site.



STO BRICK SYSTEM	STO BRICK SYSTEM	PB 804
	HORIZ.JUNCTION W'BD/STO BRICK SYSTEM - OPT 2	2019

The information contained on this page is based on our experience and research at the date of issue. The detail is for use by Registered Architects, Licensed Designers or Chartered Engineers to assist in developing project details using Sto Systems. Stoanz Ltd reserve the right to alter or update information at any time without prior notice and it is the responsibility of the designer, project manager or Sto contractor to insure they have and use the current Sto details and specifications on site.